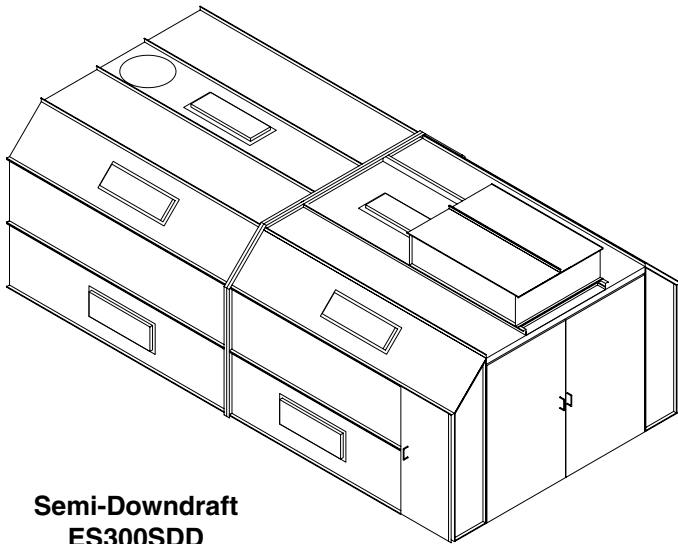


# UniCure

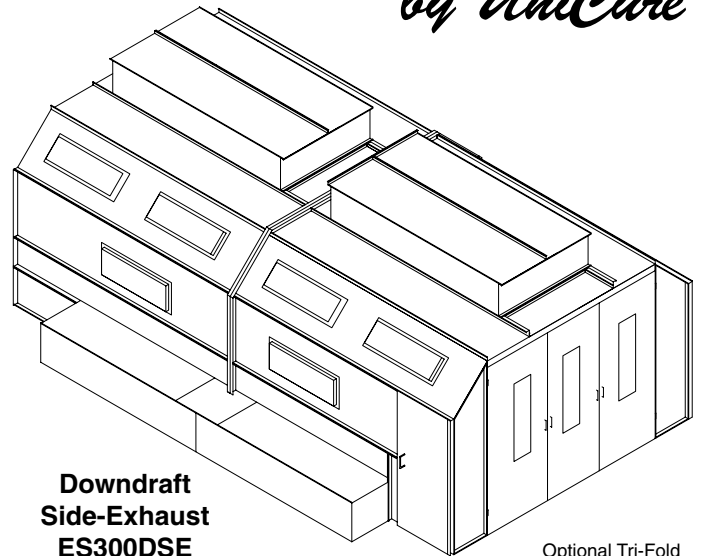
SPRAYBOOTHS

# e-Spray

by UniCure



**Semi-Downdraft  
ES300SDD**



**Downdraft  
Side-Exhaust  
ES300DSE**

Optional Tri-Fold  
Doors Shown

## Paint & Curing

### This UniCure Spraybooth Comes Complete

- Heated Air Make-Up 1.2 Million BTU with Paint & Curing Duct Package Before & After Heater
- Galvanized Steel Construction Panels
- Detail Plans for Easy Assembly
- Toll-Free Installation HELP Line
- (10) 48" 4-Tube Light Fixtures with Tubes
- (1) Set of Intake and Exhaust Filters

#### Exhaust System:

- CD & SDD - (1) 30" Tubeaxial Fan with 3HP, 3PH Motor
- DSE - (2) 24" Tubeaxial Fans with 1 1/2HP, 3PH Motors

#### Pre-Assembled Exhaust Duct Package:

- CD & SDD - (1) 30" X 9' Duct Package with Clean Out
- DSE - (2) 24" X 9' Duct Package with Clean Out
- Automatic Exhaust Air Ventilators

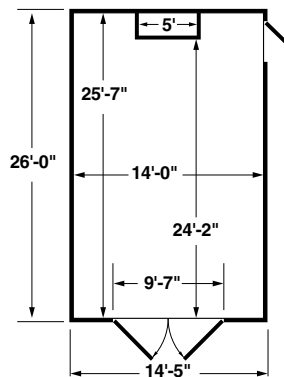
#### OPTIONAL FEATURES:

- Tri-Fold Doors
- Door Windows
- Powder Coating
- Installation
- Variable Frequency Drive



Control Panel

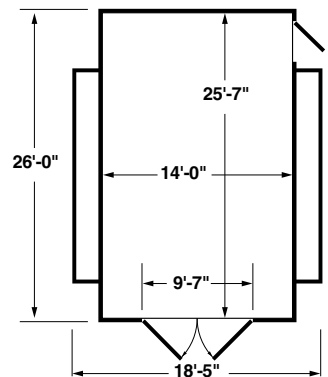
ES300SDD Dimensions



ES300SDD Dimensions

- Height . . . . . 10'-11"
- Inside Height . . . . . 9'-0"
- Door Height . . . . . 8'-8"

ES300DSE Dimensions



ES300DSE Dimensions

- Height . . . . . 10'-11"
- Inside Height . . . . . 9'-0"
- Door Height . . . . . 8'-8"

**UniCure**  
SPRAYBOOTHS

**INTERSTATE MARKETING CORPORATION**  
104 Spence Lane, Nashville, TN 37210  
*Your Collision Repair Equipment Headquarters*  
**Call Toll Free: 1-800-868-3033 • TN (615) 889-3330**  
e-mail: unicure@spraybooths.com • www.spraybooths.com