

# e-Spray

by UniCure

economy made easy!

## This UniCure Spraybooth Comes Complete

- Galvanized Steel Construction Panels
- Detail Plans for Easy Assembly
- Toll-Free Installation HELP line
- (10) 48" 4-Tube Light Fixtures with Tubes
- (1) Set of Intake & Exhaust Filters

### Exhaust System:

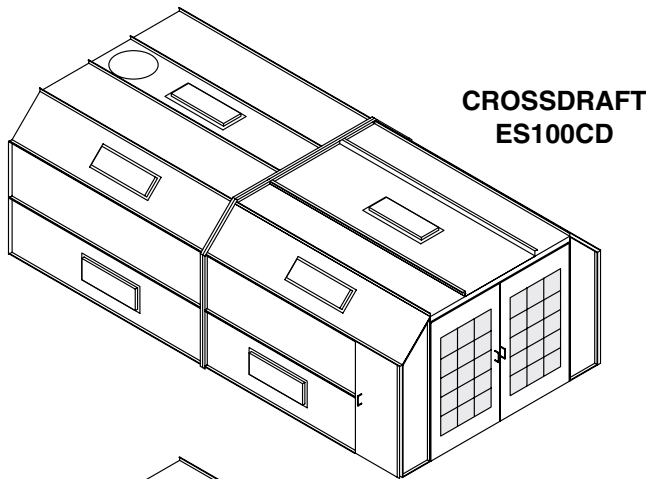
- CD & SDD - (1) 30" Tubeaxial Fan with 3HP, 3PH Motor
- DSE - (2) 24" Tubeaxial Fans with 1 1/2HP, 3PH Motors

### Pre-Assembled Exhaust Duct Package

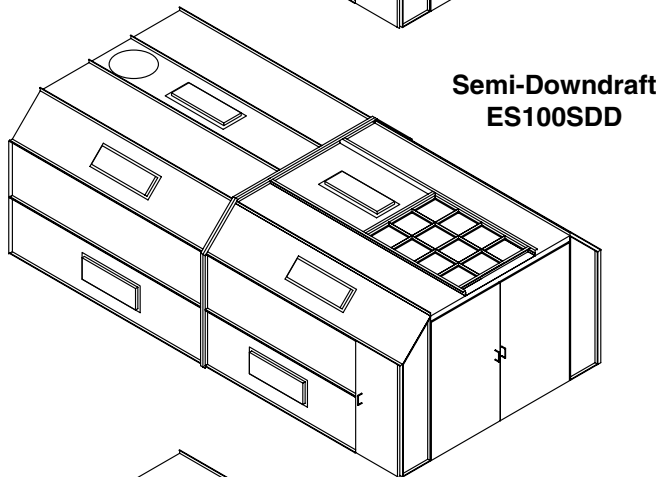
- CD & SDD - (1) 30" X 9' Duct Package with Clean Out
- DSE - (2) 24" X 9' Duct Package with Clean Out
- Automatic Exhaust Air Ventilators

### OPTIONAL FEATURES:

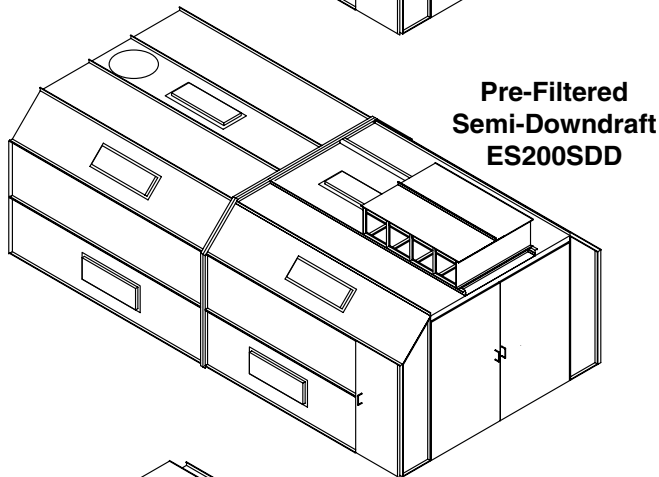
- Tri-Fold Doors
- Door Windows
- Powder Coating
- Installation



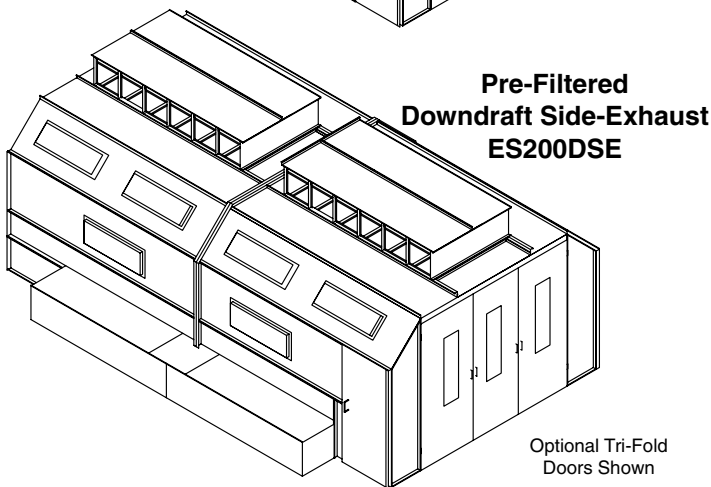
**CROSSDRAFT  
ES100CD**



**Semi-Downdraft  
ES100SDD**



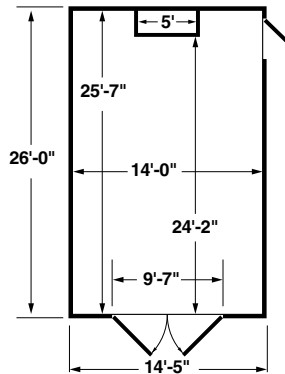
**Pre-Filtered  
Semi-Downdraft  
ES200SDD**



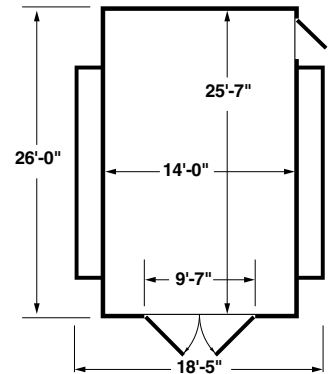
**Pre-Filtered  
Downdraft Side-Exhaust  
ES200DSE**

Optional Tri-Fold  
Doors Shown

**CD/SDD Dimensions**



**DSE Dimensions**



### ES100CD & ES100SDD

- Height . . . . . 9'-3"
- Inside Height . . . . 9'-0"
- Door Height . . . . . 8'-8"

### ES200DSE

- Height . . . . . 10'-11"
- Inside Height . . . . 9'-0"
- Door Height . . . . . 8'-8"

**UniCure**  
SPRAYBOOTHS

### INTERSTATE MARKETING CORPORATION

104 Spence Lane, Nashville, TN 37210

Your Collision Repair Equipment Headquarters

Call Toll Free: 1-800-868-3033 • TN (615) 889-3330

e-mail: unicure@spraybooths.com • www.spraybooths.com